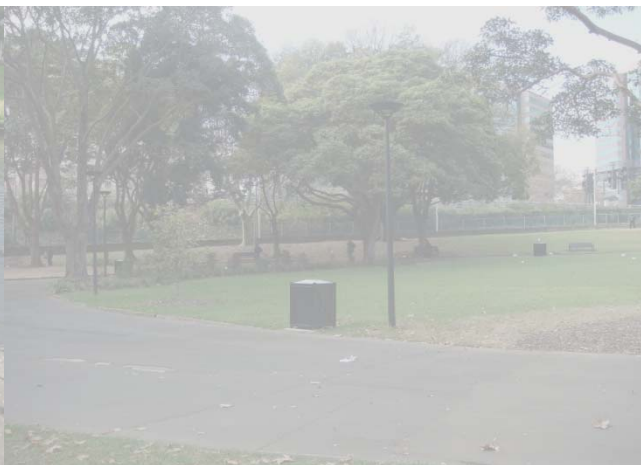




# Urban Parks in Sydney

## Group B





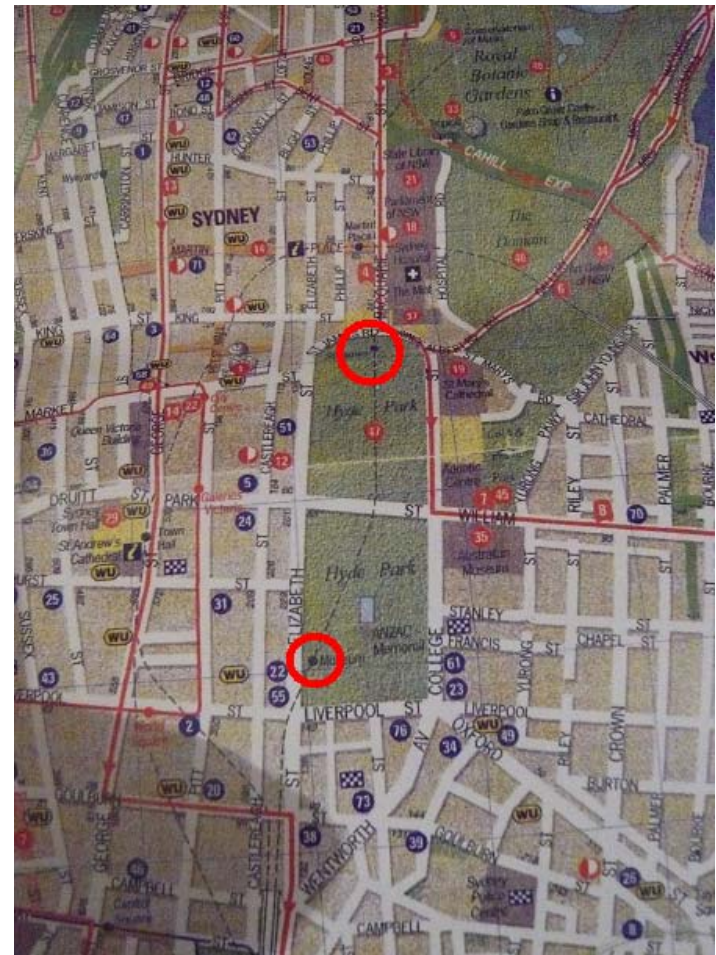
# Hyde Park

- **Location**

- Next to The Domain and city tower
- Central position of Sydney

- **Accessibility and connectivity**

- Good accessibility: railways, buses and pedestrian roads







# Hyde Park

- **Structure and surrounding land use (service target)**

- Intended functions of the park

- Memorial (Anzac, horsing-riding, cricket)
    - Buffer zone in CBD (open space within the area)

- Surrounding land use

- Commercial (hostels and trading center)
    - Institutional (churches,





# Hyde Park

- **Physical and functional designs**
  - Physical Designs
    - Anzac Memorial and Archibald water-fountain for attractions
    - Pond / grassland / garden for relaxation
    - Benches along pathways
    - Café and toilet for convenience
  - Functional Designs
    - Reading / play chess / photo-shooting / jogging / bike riding
    - Lunch / resting







# Hyde Park

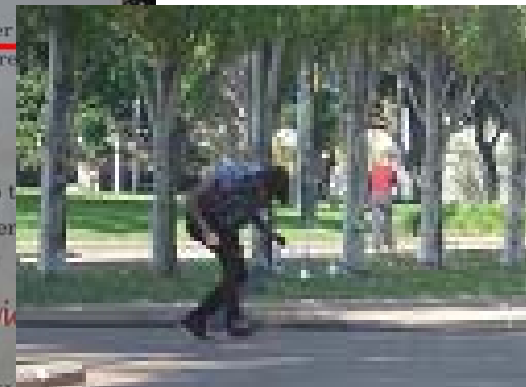
- **General management**

- Good management

- Greenery: unique planning of tree plant (4 stages)
    - Gardening: Rubbish and leaves clearance
    - Heritage Preservation: museum and water fountain

- Possible improvement

- Tighten security (Homeless and drunken people)
    - More effective enforcement of regulations (vandalism and skate-boarding)



# User-friendliness

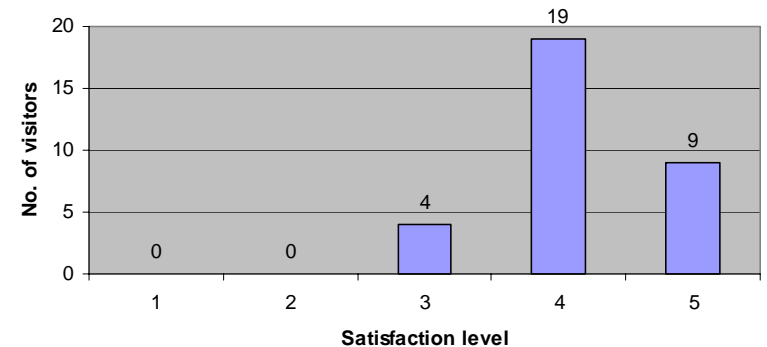
- Major visitors: not specifically defined
  - Locals (e.g. pupils, businessmen, etc)
  - Tourists

Major visitors of Hyde Park



- Satisfaction level
  - Mostly contented with the park

Satisfaction level of Hyde Park





# Hyde Park

- Users' views
  - Positive
    - Increase life expectancy of people
    - Place for relaxation / escape from stress
    - Natural landscape in city-center
    - Beautiful scenery
  - Improvement
    - Children's playground
    - Regulate homeless people
- Our observations
  - Harmonization with surrounding area (e.g. fire drill)
  - Complement (e.g. smoke place for office people/ Fire drill / donation collection)





# The Royal Botanic Garden





# Location and Accessibility

- Martin Place
- 2 stops away from the central station
- Near the CBD
- Bus stops nearby
- Trackless train from near the Opera House
- Car parks are provided
- → High accessibility

# Surrounding landuse

## Surrounding land use

- Commercial land use
- Institutional land use
- Museum
- Shops
- Restaurants





# Design

## Physical Design

- Rubbish bins and Recycling bins
- Toilets
- Shops and Restaurant
- Palm House
- Gardens with different themes
- Lodges and gardens are available for hiring
- Tall trees planted along the edge
- No fence
- Benches facing away from the streets







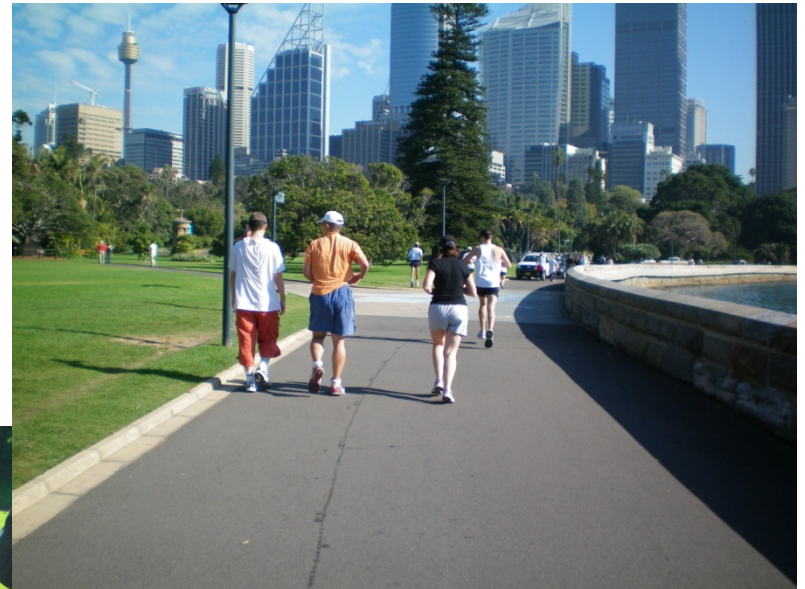




# Design

## Functional Design

- Picnic
- Having Lunch
- Jogging
- Sight-seeing
- Relaxation
- Exercise
- Fishing
- Excursion
- Education



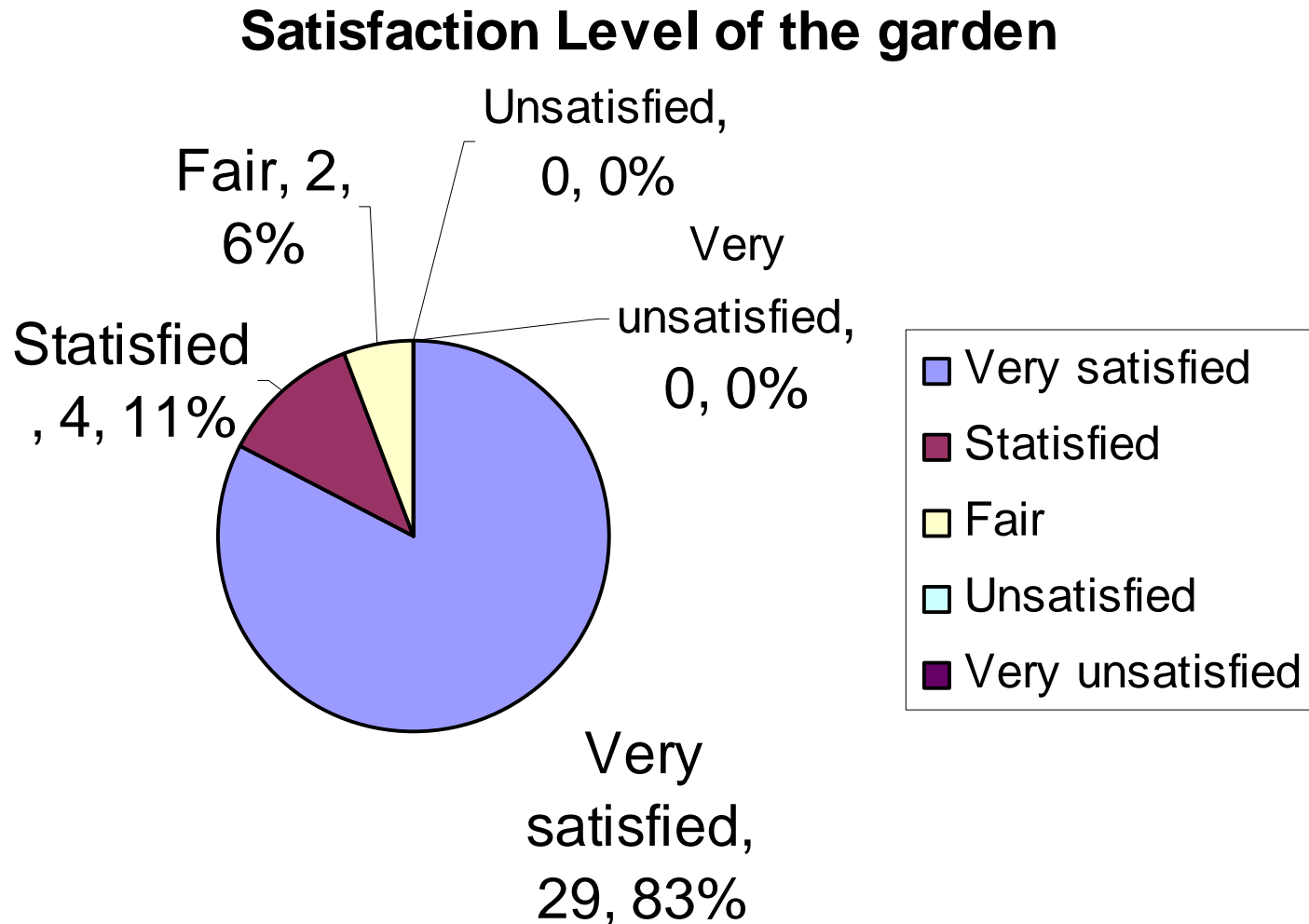
# Management

- Trees and environment maintenance
- Special design to prevent grouping of birds
- No entry after 5
- Public participation and funding
  - Friends of The Gardens: Membership
  - The Botanic Gardens Trust: Donation





# User-friendliness



# Users Friendliness

## Positive

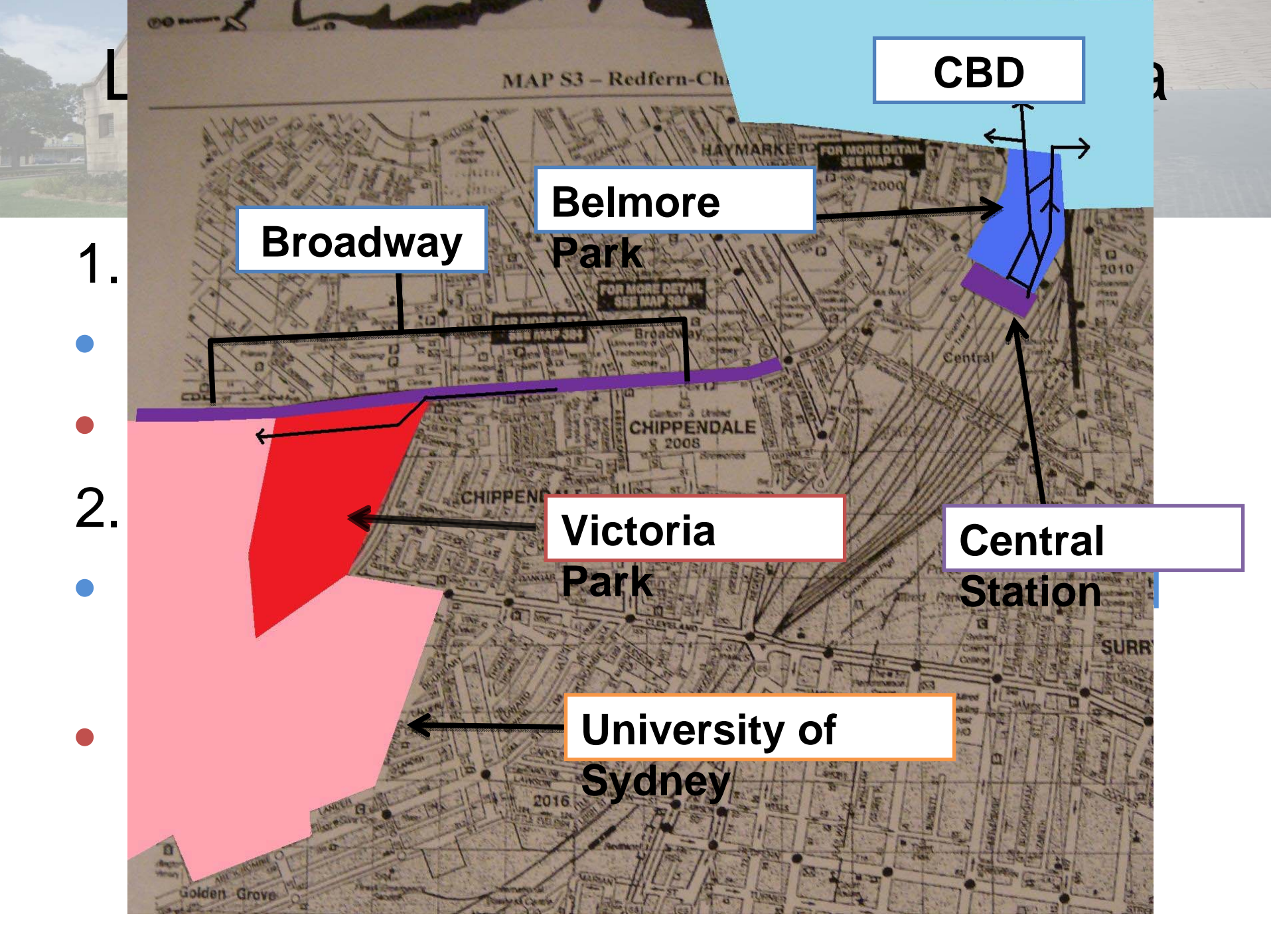
- No fence
- Walk on grass
- Free guided walks
- Display boards / signs

## Negative

- Not enough toilet
- Not enough rubbish bins







CBD

Belmore  
Park

Broadway

Victoria  
Park

Central  
Station

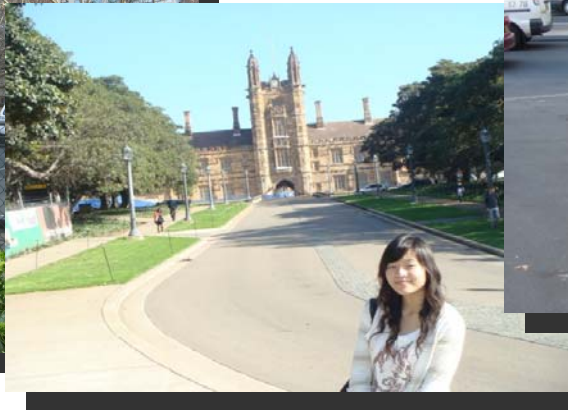
University of  
Sydney



# Local Parks: Belmore and Victoria Park

## 3. Edge features and surrounding land use

- Belmore: Offices, bus stops and train station, hotels
- Victoria: University, stores, residential buildings, main route (Broadway Street)



# Local Parks: Belmore and Victoria Park

## 4. Design and facilities

- simple, open, with convenient routes, trees and grass as the main features
- Belmore: benches (33) and rubbish bins (16)
- Victoria: Swimming pool, lake, children playground, benches (29) and rubbish bins (14)

## 5. Major users:

- Belmore: Pedestrians, workers nearby, passengers waiting for the bus and trains
- Victoria: students, residents nearby





# Local Parks: Belmore and Victoria Park

## 6. Major uses:

- Belmore: lunch, waiting, gathering, exercises, dog walk, sunbathing, sleeping
- Victoria: skipping from lessons, lunch, chatting, reading, swimming, playing with





# Local Parks: Belmore and Victoria Park

## 7. General Management

- Belmore: low input
- Victoria: frequent gardening and cleaning





# Local Parks: Belmore and Victoria Park

## 8. User-friendliness

Positive :

- Well-connected pedestrian paths
- Openness: Trees and grass for activities and psychological benefits
- Area of Victoria > Belmore, but number of benches in Belmore > Victoria
- Belmore: least intervention (limited space, great pedestrian flow)

Negative:

- Belmore: litter on the grass, bad smell



# Comparison between 3 parks

## – *Hyde*

- more intimate and catch-able, more suitable for family-based activities
- Major function = buffer zone in CBD

## – *Royal*

- more official and high-class
- Multi-function

## – *Belmore and Victoria*

- For temporary, frequent and convenient uses
- Major function = transition area





# Conclusion

## Sydney's experience

- People mostly think that the existence of the parks is worthwhile
- Feel themselves connected with the parks
- Enjoy the parks to a greater extent

## Lessons for Hong Kong

1. Encourage public involvement  
(e.g. funding scheme in Royal Park)
  2. Design and management of each park cater to targeted people's needs  
(e.g. paths for pedestrian in Victoria and Belmore Park)
  3. Integration of parks into people's daily lives  
(e.g. walk through Hyde Park to work place)
- Harmony between the parks and the surrounding area
- People enjoy the parks more and consider the parks worthwhile!!